

# Ultrasound Guidelines.

## Artificial Sphincter Reservoir.

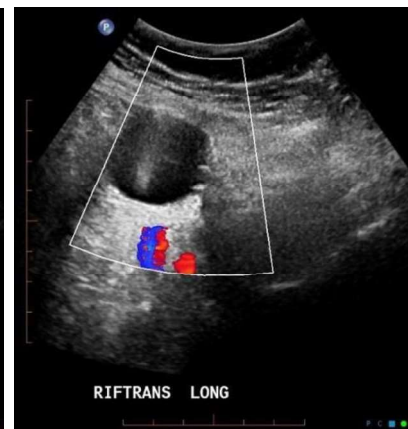
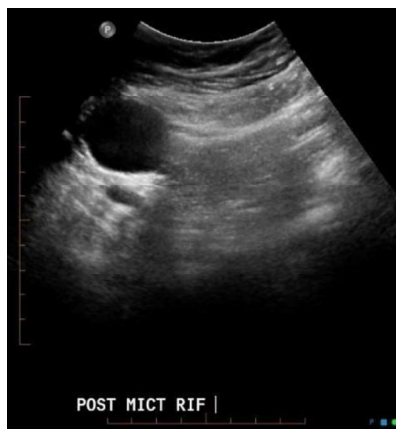
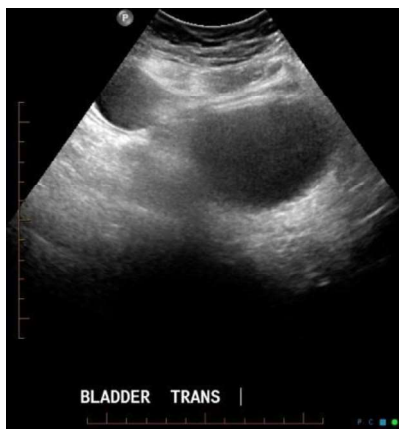
Mr Belal and his team sometimes ask for the measurement of an artificial sphincter reservoir.

- You need to look in the lower abdomen or pelvis for a rounded fluid filled structure.
- This will look like a catheter balloon.
- You need to measure this in three dimensions', which will give a volume measurement.

These are uncommon examinations but without this information this renders the examination of no use and requires the patient to be recalled.

If anybody is uncertain about this, please seek further advice.

Rounded, well-defined cystic "mass" in the RIF that persists following micturition and is not associated with blood flow on colour Doppler (sitting anterior to the common femoral vessels



Document Name:	Author:	Issue Date:
US guidelines artificial sphincter	Bushra Ali	26/09/19
Version:	Authorised By:	Review Date:
2.0	Clair Powell	26/09/22